

Become a Museum Member

Benefits of membership include:

- Free admission
- 10% discount in Excavations Gift Shop
- Priority enrollment in museum programs
- Subscription to *The Pteranodon* e-newsletter
- Free or discounted admission to over 350 museums and science centers worldwide.

For details and an application, stop by the admissions desk, visit our website, or give us a call.

Let us Host Your Tour or Event

We offer guided tours for school field trips, tour buses, or other groups. Call **785•639•5249** to schedule a tour. We also have rooms available for meetings, birthday parties, or other special events. For more information, call **785•628•4286**.

For more information:

Call 877•332•1165
or visit our website at:
Sternberg.fhsu.edu



**FORT HAYS STATE
UNIVERSITY**

Forward thinking. World ready.

12/2021

Welcome
to:



FORT HAYS STATE UNIVERSITY'S
STERNBERG MUSEUM
OF NATURAL HISTORY

Admission Fees:

General Public Admission

\$10 for adults (age 13-59)
\$9 for seniors (age 60+)
\$7 for youth (age 4-12)
\$6 for FHSU students (with valid ID)

Free Admission for:

Museum Members
Members of ASTC Passport Program
Children 3 and under

Summer Hours:

(April 1—September 30)

OPEN DAILY

Monday—Saturday: 9 a.m.—6 p.m.
Sunday: 1 p.m.—6 p.m.

Winter Hours:

(October 1—March 31)

Tuesday—Saturday: 9 a.m.—6 p.m.
Sunday: 1 p.m.—6 p.m.

3000 Sternberg Drive ■ Hays ■ Kansas ■ 67601

The Western Interior Seaway

Kansas under water? Millions of years ago a large inland sea, the Western Interior Seaway (sometimes referred to as the Cretaceous Interior Seaway), covered much of the area that is now known as the Great Plains region which includes Kansas. Living in this tropical sea were large fish, reptiles, sharks, turtles, ammonites, and other unusual characters.

Today, preserved in the surface rocks of western Kansas, are the fossilized remains of many of these prehistoric creatures that lived 80 to 100 million years ago.



During the first half of the 20th century, the Sternberg family collected some of these spectacular fossils. Their finds, displayed in major museums around the world, have played a dominant role in initiating the study of North American fossil vertebrates.

The Geologic Time Scale

Era	Period	Examples of Life Forms	Age
Cenozoic	Quaternary	mammoths sabre-toothed cats	2.5
	Neogene	early horses Megalodon (sea)	
	Paleogene	crocodilians (sea) primates (land)	23
Mesozoic	Cretaceous	Tyrannosaurus flowering plants	66
	Jurassic	Allosaurus (land) birds (air)	145
	Triassic	Ichthyosaur (sea) pterosaurs (air)	201
Paleozoic	Permian	mammal-like reptiles (land)	251
	Pennsylvanian	amphibians & reptiles (land)	299
	Mississippian	Arthropods & Crinoids (sea)	318
	Devonian	vertebrate fishes	359
	Silurian	terrestrial plants	416
	Ordovician	clams (sea)	444
	Cambrian	Trilobites (sea)	488
Precambrian	one-celled animals	542	

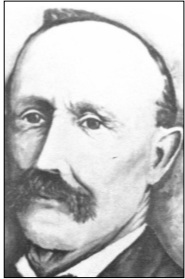
Several geologic periods are preserved at the surface in Kansas. The oldest rocks are in the southeast corner of the state, and the bedrock generally gets younger to the west.

Mississippian, Pennsylvanian, and Permian age rocks outcrop in the eastern half of Kansas, and Cretaceous and younger rocks outcrop in the west. Most of the fossils on display highlight the Cretaceous Period, the last age of the Mesozoic.

Who are the Sternbergs?

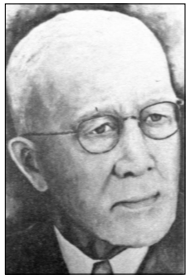
Dr. George M. Sternberg, renowned Civil War surgeon and later Surgeon General of the United States Army, was assigned to Fort Harker (Fort Ellsworth), Kansas in 1866. While stationed in Kansas, Dr. Sternberg often visited posts along the Smoky Hill Trail. During his travels, Sternberg helped to identify fossil bones that had been found by soldiers on patrol in western Kansas.

When Dr. Sternberg purchased a ranch near Fort Harker, his brother Charles H. Sternberg was invited to help manage it. Charles became interested in collecting fossil leaves found in the sandstone hills near the ranch. Many of the specimens that Charles found are preserved in larger museums in North America and Europe.

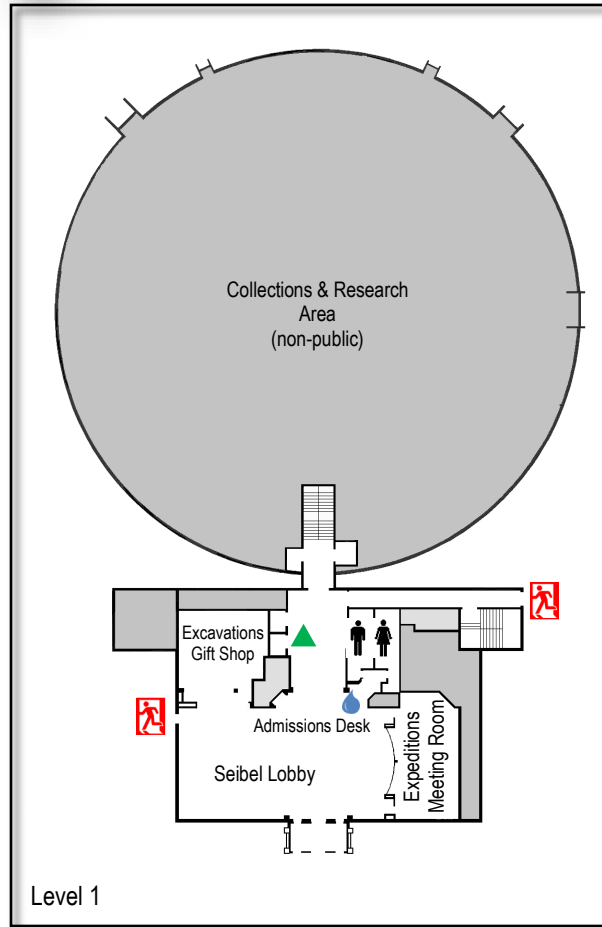


Charles H. Sternberg

Charles' three sons, George F., Levi, and Charles M. followed in their father's footsteps and became fossil hunters. At the age of nine years, the eldest son, George F., discovered an unusual fossil reptile, a plesiosaur. This prompted George to devote his life to hunting, collecting, and preparing fossils now displayed in museums around the world.



George became affiliated with the museum of what was then known as the Western Branch of the Kansas Normal School and was named curator in 1928. In 1952, George discovered the famous *fish-within-a-fish*, the most complete specimen of its kind known. George remained with the college museum until his retirement in 1962. After George's death in 1969, the museum was renamed in honor of the Sternberg family.



Level 1

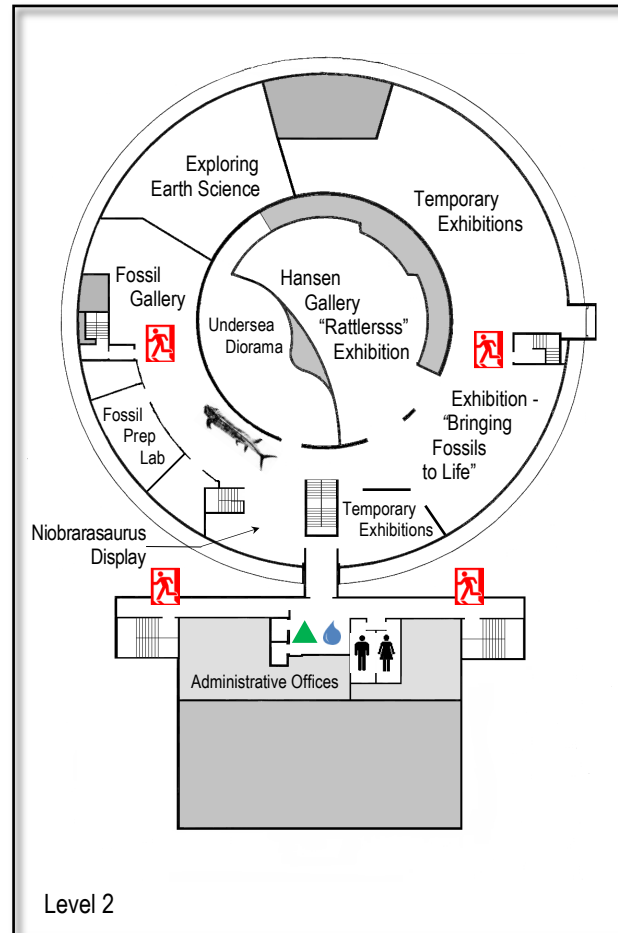
The museum is fully accessible and is equipped to accommodate many special needs. Inquire at the admissions desk.

Courtesy wheelchairs are available for museum patrons' use. Inquire at the admissions desk.

Baby changing stations are located in the restrooms on first and third levels. A nursing area for mothers and babies is located in the women's restroom on the main level.

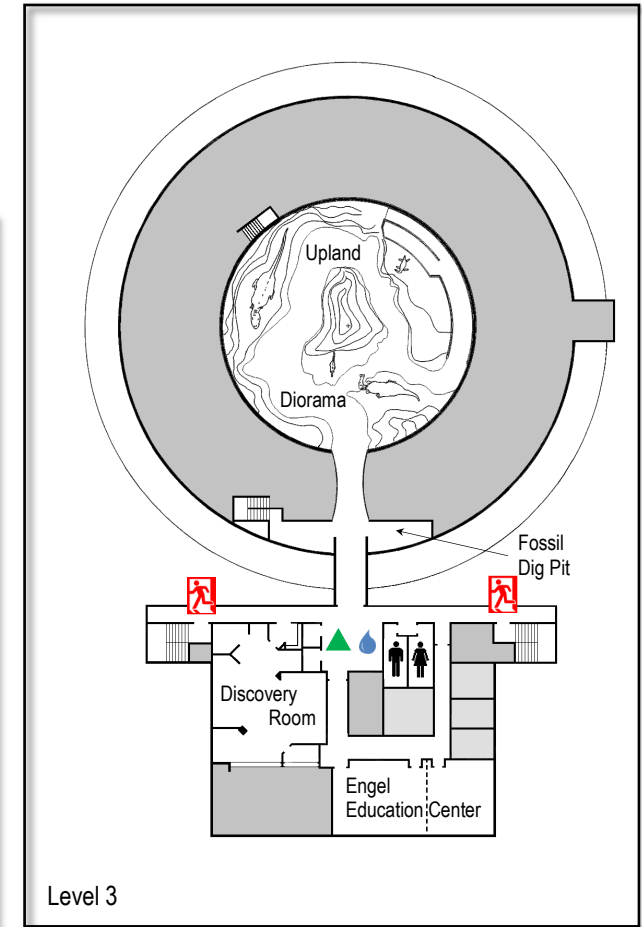


FORT HAYS STATE UNIVERSITY'S
STERNBERG MUSEUM
OF NATURAL HISTORY



Level 2

Please remain on the pathways in the galleries and dioramas. Please do not climb into or on displays. Some of our exhibits contain live reptiles including rattlesnakes. We ask that you do not tap on glass enclosures.



Level 3

Key to Symbols:

- Elevators
- Emergency Exits
- Restrooms
- Water Fountain